

How to get to CANDLEWOOD SUITES & WESTERN AVE Volunteer Parking Lot from I-93



From I-91 Southbound
(do NOT come from I-91 Northbound – construction traffic is expected to be VERY bad)

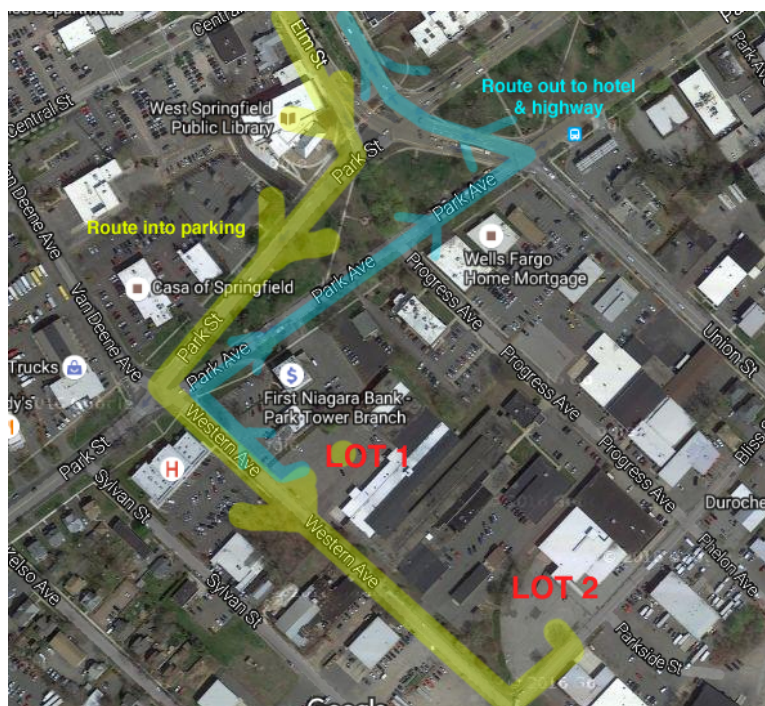
Get off Exit 13B and turn right off the ramp onto Route 5, Riverdale St.

Follow about a mile. Stay in right lane. After the Rave Cinema complex, there is a fork at the light – go to the right onto Elm Street.

Candlewood Suites will be on your left. If you have to pick up your orientation packet with tickets and parking pass, it will be at the front desk with your name on it.

See next page to get to the Volunteer Parking Lots on Western Ave.

1.5 ish miles from hotel to parking lots



Close up of parking lots.

Note the different traffic pattern when you leave to go home.

HINT: Always follow the green common – turn at the first opportunity coming and going.

When leaving, the road almost reverses on itself at the light and then crosses Park Street at another light before it goes up Elm Street.